

“SR060”

Submersible Diesel Refuelling Pump

A new concept in "Off Road" vehicle refuelling which uses advanced hydro-dynamic technology to refuel fast and safely whilst being kind to the environment.

The cost effective solution to plant refuelling.

Features & Benefits

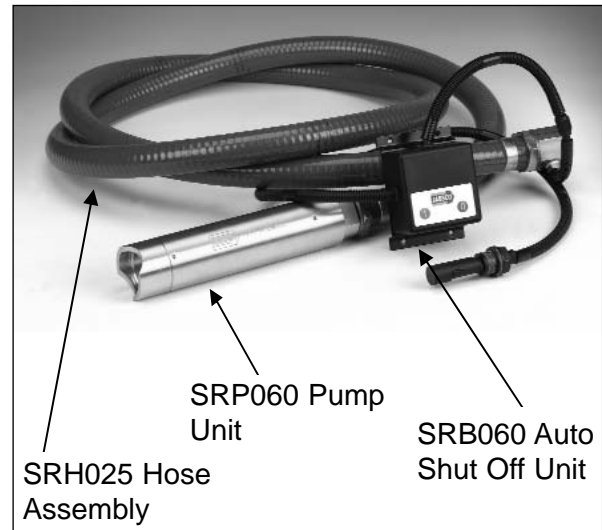
- Faster refuelling - up to 70 litres per minute (18 U.S. GPM)
- Compact easy to install
- Suitable for Short radius or Zero swing machines
- Greater tolerance of small debris (up to 1.0mm diameter)
- 2 Year Warranty
- Quick change for fast repair
- Low maintenance
- Switched or Automatic Shut-off options
- Fully sealed electrics, in conformance to IP68

Model Range

Part Number	Description
SRA060-6113	Pump Assy. 60 l/min 24Vdc, 3m hose, auto shut-off controller <u>with</u> float switch
SRA060-6112	Pump Assy. 60 l/min 24Vdc, 3m hose, auto shut-off controller <u>without</u> float switch
SRA060-6111	Pump Assy. 60 l/min 24Vdc, 3m hose, manual switch
SRA060-6110	Pump Assy. 60 l/min 24Vdc, 3m hose, <u>no</u> switch

SRB060-0002B	Auto shut-off controller kit
SRB060-0001B	Manual switch kit.
SRH025-6020B	1" Hose Kit : - 3m long hose, (-20°C rated)
SRH025-6010B	1" Hose Kit : - 3m long hose, (-10°C rated)
SRP060-0100	Pump unit 60 l/m 24Vdc

SRK060-0010	Pump/hose clamp kit.
SRK060-0030	Strainer kit
92005-6015	Fuse spare
23529-0502B	Float switch spare "Cannon" connector



Typical Applications

- Designed to be installed on Diesel powered vehicles and plant with tank sizes up to 600 litres. (160 US Gallons)
- Suitable for fitting to the following equipment: Tracked and Wheeled Excavators, Loaders, Cranes, Road rollers (compactors), Pavers, Agricultural machines, Generators and Helicopters.
- Suitable for Diesel fuel, Kerosene and Paraffin fluids which must have a flashpoint above 37°C.
- Designed to fit into a standard 205 litre drum.
- 24Volt dc connection.

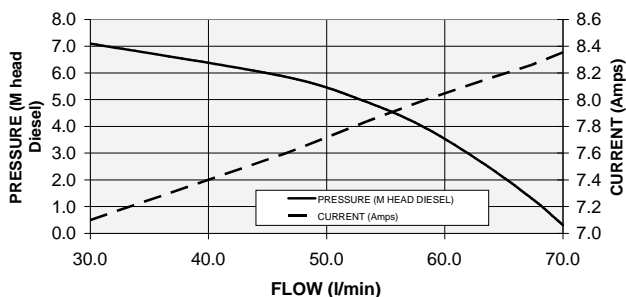
Specification

- 60 Litres per min @ 3 metres head
- Temperature range -30°C to +50°C
- Duty time 10 minutes on 5 min off
- Maximum head of 5 metres

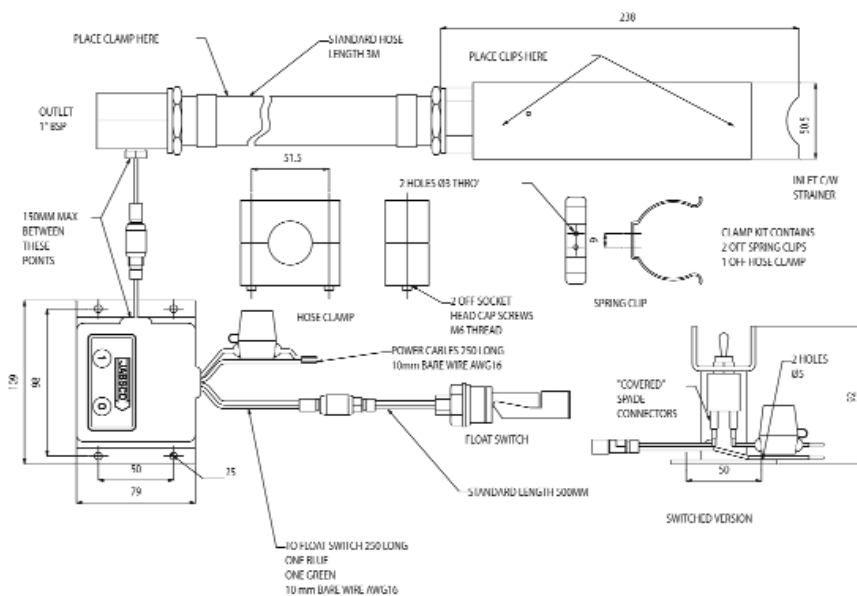
Test Specification	IEC 68-2-11:1999: Test Ka
Test Specification	BS EN ISO 4672:1999, Method B
Test Specification	MIL-PRF-28800F, Paragraph 4.5.5.1.1.1, Test (a)
Test Specification	LR Type Specification No. 1 (IEC 60068-2-1:1990: Tests Ab/Ad)
Test Specification	LR Type Specification No. 1 (IEC 60068-2-2:1974: Tests Bb/Bd)
Test Specification	Def-Stan 07-55, Part 2, Section 1/1, Test A2, Paragraph 4 (1) a (i), Level 2
Test Specification	BS EN 60529:1992
Test Specification	LR Type Specification No. 1 Paragraph 14

Current & Pressure V's Flow

CURRENT AND PRESSURE vs FLOW
Diesel Calibration Fluid 20°C 24V



Installation Drawing



ITT

Engineered for life

Jabsco, 1 Kondelin Road, Cape Ann Industrial Park, Gloucester, MA 01930
Tel : +1 978 281 0440 Fax : +1 978 283 2619

USA

Jabsco, Bingley Road, Hoddesdon, Hertfordshire, EN11 0BU
Tel : +44 (0)1992 450145 Fax : +44 (0)1992 467132

UK

Fluid Products Canada, 55 Royal Road, Guelph, Ontario N1H 1T1
Tel : +1 519 821 1900 Fax : +1 519 821 5316

CANADA

NHK Jabsco Co Ltd, 3-21-10, Shin - Yokohama, Kohoku-ku, Yokohama 222
Tel : +81 (0) 45 475 8906 Fax : +81 (0) 45 475 8908

JAPAN

Jabsco GmbH, Oststraße 28, 22844 Norderstedt
Tel : +49 (0) 40 53 53 73 0 Fax : +49 (0) 40 53 53 73 11

GERMANY

Jabsco Italia, s.r.l., Via Tommaseo, 6, 20059 Vimercate, Milano
Tel : +39 039 685 2323 Fax : +39 039 666 307

ITALY